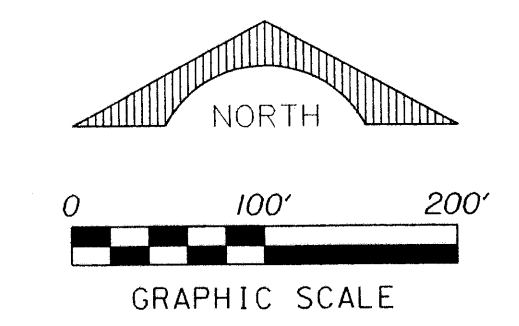


A PORTION OF THE ORANGE POINT P.U.D.
WELLINGTON PRESERVE
A PORTION OF SECTION 34, TOWNSHIP 44 SOUTH, RANGE 41, EAST,
VILLAGE OF WELLINGTON, PALM BEACH COUNTY, FLORIDA.
DECEMBER 2003

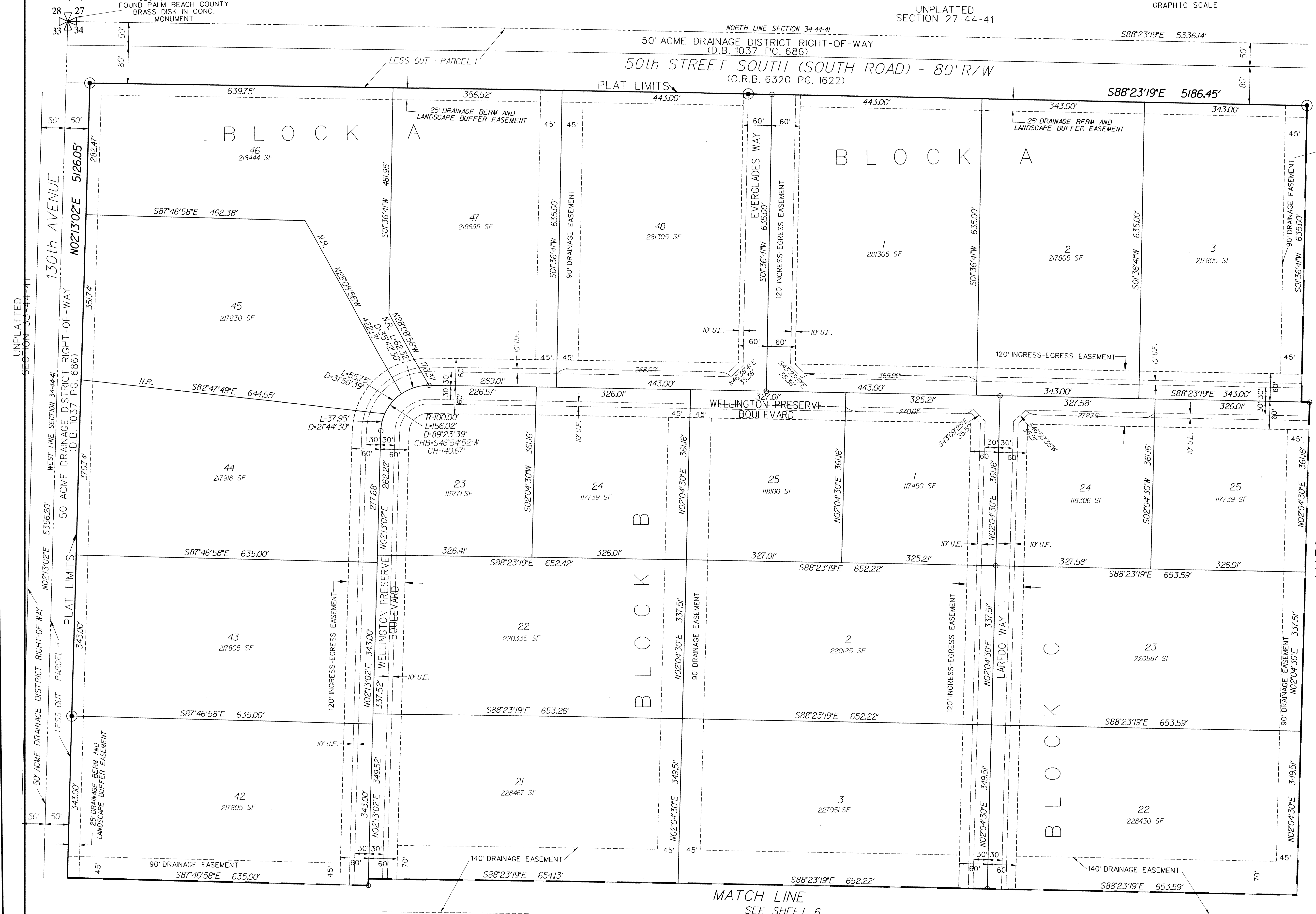
PERIMETER

SURVEYING & MAPPING
Prepared by: Jeff S. Hodapp, P.S.M.
Certificate of Authorization No. LB7264
951 Broken Sound Parkway, Suite 108
Boca Raton, Florida 33487

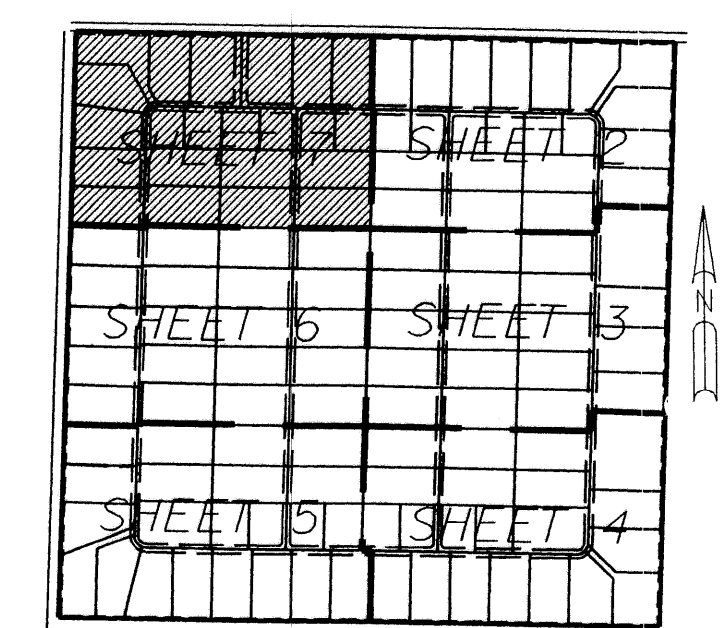
Tel: (561) 241-9988
Fax: (561) 241-5182
NORTHWEST CORNER
SECTION 34-44-41
FOUND PALM BEACH COUNTY
BRASS DISK IN CONC.
MONUMENT



UNPLATTED
SECTION 27-44-41



SHEET 7 OF 7



KEY MAP
NOT TO SCALE

MATCH LINE
SEE SHEET 2

LEGEND:

- ⊙ SET P.R.M. (UNLESS OTHERWISE NOTED) - ALUMINUM DISK IN 4"x4" CONC. MON. STAMPED *LB7264
- P.C.P. CENTERLINE

ABBREVIATIONS:

- CHD CHORD BEARING
- CONC. CONCRETE
- COR. CORNER
- Δ DELTA (CENTRAL ANGLE)
- D.B. DEED BOOK
- D.E. DRAINAGE EASEMENT
- L. ARCLength
- L.B. LICENSED BUSINESS
- L.M.E. LAKE MAINTENANCE EASEMENT
- L.A.E. LAKE ACCESS EASEMENT
- L.S. LICENSED SURVEYOR
- MON. MONUMENT
- O.R.B. OFFICIAL RECORDS BOOK
- N.R. NON-RADIAL
- P.B. PLAT BOOK
- P.B.C.R. PALM BEACH COUNTY RECORDS
- P.C. PAGE
- P.C.P. PERMANENT CONTROL POINT
- P.R.M. PERMANENT REFERENCE MONUMENT
- P.S.M. PROFESSIONAL SURVEYOR & MAPPER
- P.U.D. PLANNED UNIT DEVELOPMENT
- R. RADIUS
- R/W. RIGHT-OF-WAY
- SEC. SECTION
- S.F. SQUARE FEET
- U.E. UTILITY EASEMENT

MATCH LINE
SEE SHEET 6